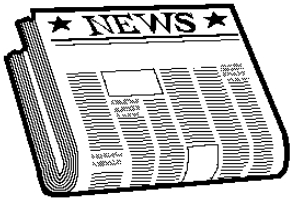


# R1-10 Prism Release Notes

Telescan LLC

Prism Release Notes  
March, 2010

## Highlights of this Release



In addition to new features, this update to Spectrum Prism incorporates a number of corrections and performance enhancements. There is also an update to the offline Prism Account Editor.

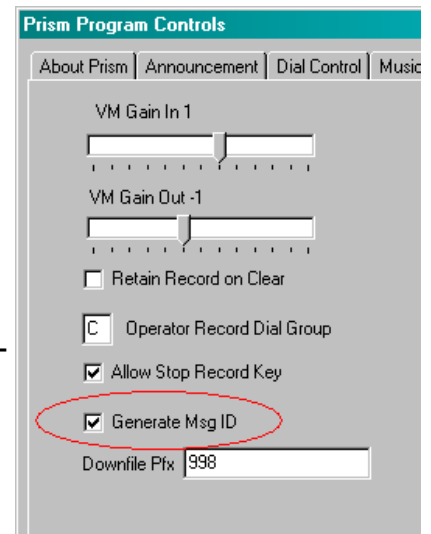
- Automatic message downfile
- Outbound Caller ID
- Operator voice log playback

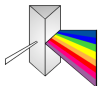
### What's Inside

Highlights	1
Automatic msg downfile	1
Outbound CID	2
Operator voice log play	2
Improvements & Fixes	3
Installation	4

## Automatic Message Downfile

This release includes the ability to “tag” voice messages recorded on a Centurisoft voice mail system with a unique identifier. This identifier can then be associated with a message taken on the Spectrum Data Manager. When the voice message is played or deleted, the associated SDM message can be automatically downfiled. The feature is enabled on the Prism on the “Record and Log” tab of the System panel. This feature can be disabled on a per-account basis on the Voice Mail tab of SDM's account setup window by checking “Disable Text Message Downfile from Vmail”.

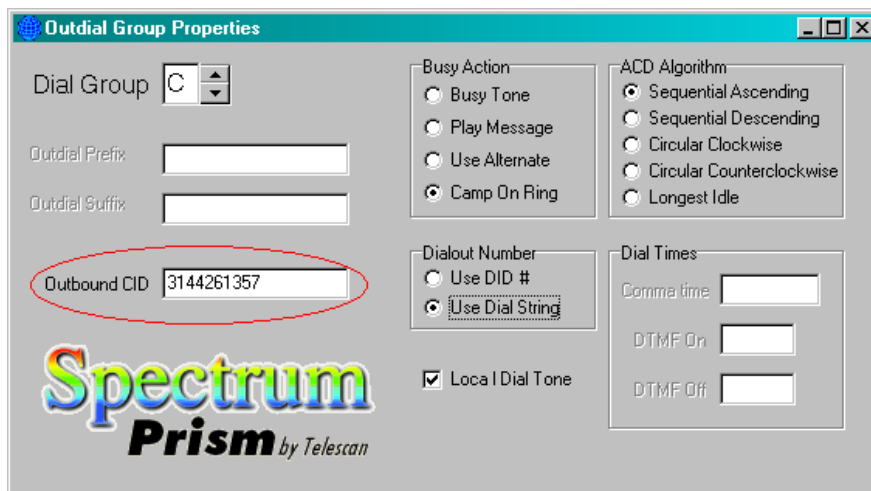




## Outbound Caller ID

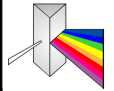
On Windows 2003 based Prism systems, the outbound Caller ID can be specified. This feature has been enhanced to allow a different caller ID for each outbound dial group. This can provide a “local” caller ID to the called parties on trunks from other communities. Another use is to provide a variety of callback numbers to allow customized handling for client callback on the CID.

Outbound Caller IDs are programmed on the Outdial Group Properties window. If there is no Caller ID programmed for a specific dial group, the system wide default will be used.



## Voice log playback

If your installation includes a Panda voice logger connected to the workstation audio paths, you can play logged conversations directly on the workstation. This feature will require the R1-10 update be applied for both the workstation and the SDM for local stations, and also to the Prism to allow playback on remotely connected stations. Refer to the SDM and workstation release notes for further information.



## Improvements and Corrections

### 1. General

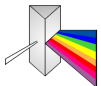
- Add support for extensions through channel bank
- Auto create or find folders for account backup and music
- Set of dial groups available to operators made programmable
- B channel initialization bug fixed
- Exception on clear of remote station corrected
- External music port initialization corrected

### 2. Account setup

- Default settings for account create changed
- “Duplicate keys not allowed” bug fixed

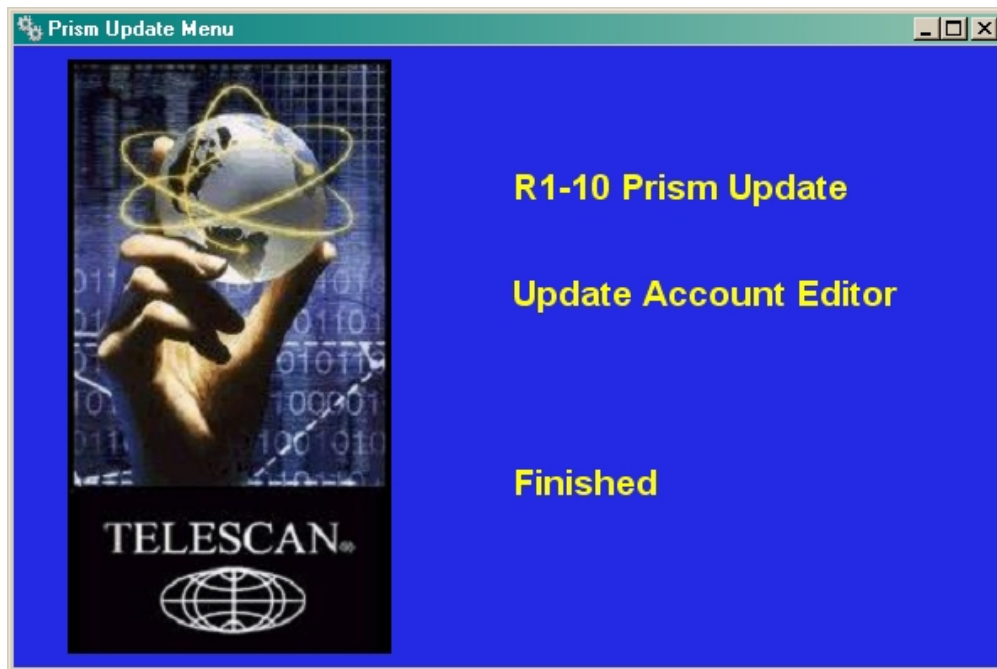
### 3. Internal Voice Mail

- Send port error memo only once
- Station “cannot record” due to locked temporary file bug fixed
- Additional diagnostic logging

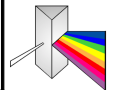


## Installation

1. Insert the update CD into Prism's CD / DVD drive. The CD should auto-start and you will be presented with this selection window. If the CD does not auto start, "explore" the CD and double-click "UpdateMenu.exe".

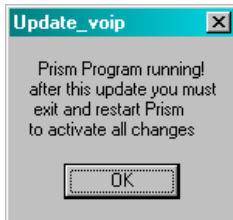


2. To update Prism, click on "R1-10 Prism Update". This can be done while Prism is running. You can accept all installation defaults. After basic installation (file copy), the program update utility will be run (Instructions on next page). The Prism program must be restarted for new features to take effect.
3. The standalone Prism account editor can be installed on any Windows® computer. You can accept all defaults for installation. This installation will install both the account editor and the Prism documentation on the target computer.
4. Click the "X" in the upper right corner, or "Finished" after you have completed the updates.

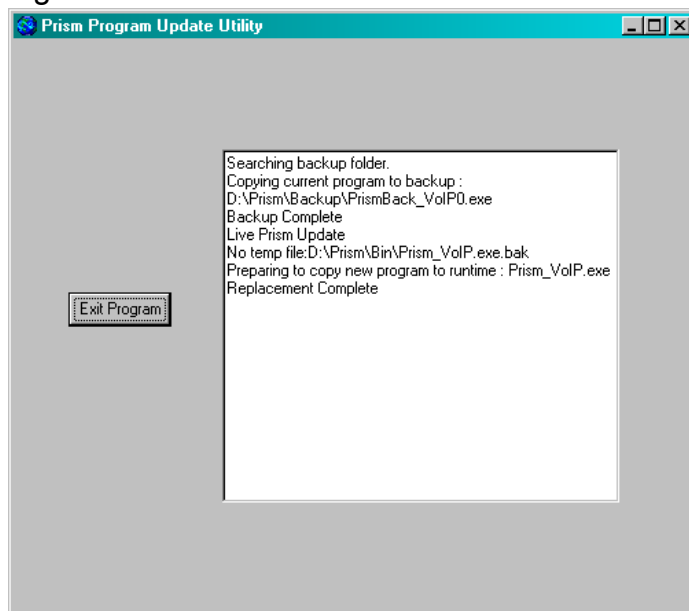


## Installation

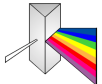
1. After the update program has copied the new files to Prism's hard drive, an additional utility program to install the new files will be started. If Prism is running, you will have to acknowledge the need for a restart in the following window:



2. In the window that opens next, click the 'Update Prism' button and confirm the update. Update progress will be shown in the text box.



3. After the update is complete, close the window by clicking the 'X' in the upper right corner and start or re-start the Prism program.



Telescan LLC  
10679 Midwest Industrial Blvd.  
Saint Louis, Missouri 63132

Phone: 314.426.7662  
Fax: 314.426.1357