

Spectrum System Spectrum Data Manager and Comm Server Update Instructions

2010 Release 1

April 2010

This program is provided for use in updating the Spectrum Data Manager (SDM) and Comm Server software. Note that if your SDM and Comm Server software modules are installed on separate computers, you will need to run this update program on each computer, selecting the relevant modules for each computer.

Spectrum Data Manager and Comm Server Update Instructions

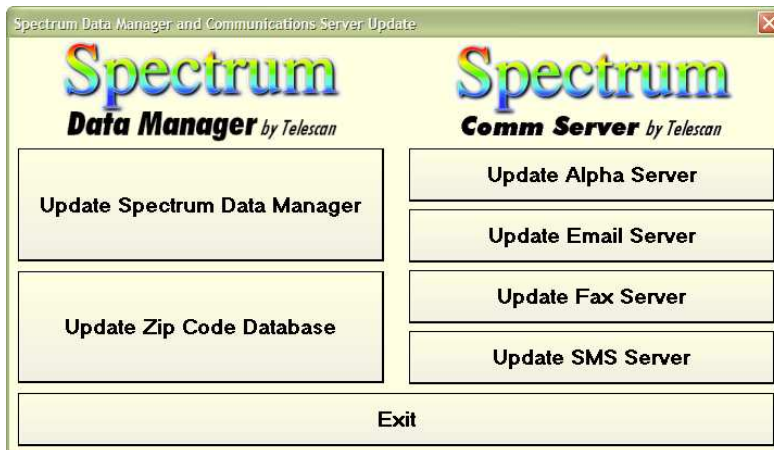
Please review the following instructions carefully and call with any questions. Phone support for the update is available from 9:00 AM to 5:00 PM Central Time at (314) 426-7662.

Part 1. Spectrum Data Manager

The first step of the update to SDM may be done while SDM is running. In this step the new version of SDM and its zip code database will be installed. The second step involves re-starting the SDM program in order to activate the new version. This may be done later at a convenient time.

Step 1. Install the new version of the SDM program and Zip Code Database.

Insert the *Spectrum Data Manager and Comm Server Update* CD. The CD should 'auto-run' and bring up the following window.

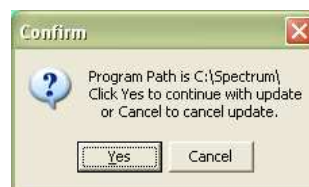


(If the window does not present itself within a minute, then use Windows Explorer to browse to the CD. Then run the update program by double-clicking the file 'SpectrumSDMCommUpdate.exe' in the root folder.)

Click on the 'Update Spectrum Data Manager' button.

The window at right will appear. Either 'C:\Spectrum\' or 'D:\Spectrum\' or 'E:\Spectrum\' is acceptable as a path.

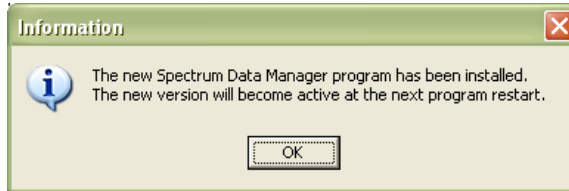
Click on the 'Yes' button.



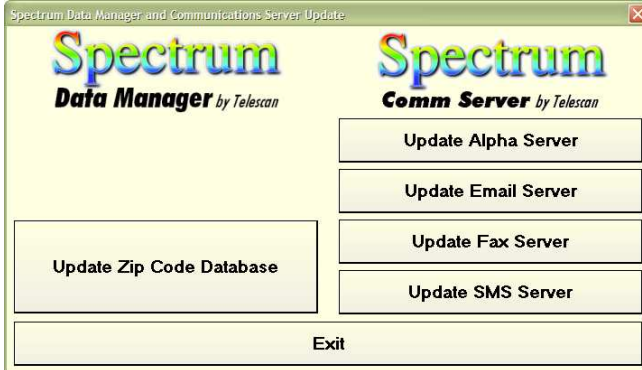
(Continued on next page)

The window at the right will appear.

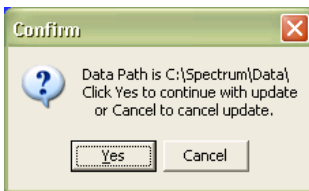
Click on the 'OK' button.



The 'Spectrum Data Manager Update' window will now appear as follows:



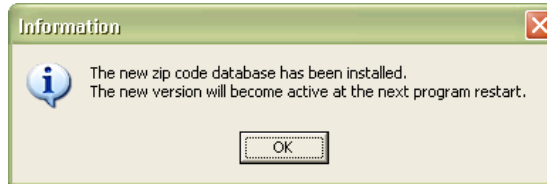
Click on the 'Update Zip Code Database' button. The following window will appear. Either 'C:\Spectrum\Data\' or 'D:\Spectrum\Data\' or 'E:\Spectrum\Data\' is acceptable.



Click on the 'Yes' Button.

The window at the right will appear.

Click on the 'OK' button.



The new versions of the Spectrum Data Manager and Zip Code Database are now installed. The Spectrum Data Manager program may be restarted at any convenient time to begin running the new version. As to the Comm Server update, you may either proceed to update the Comm Server modules now or click on the 'Exit' button. If exiting, you may remove the CD from the CD drive.

Step 2. Restart the Spectrum Data Manager Program to begin running the new version.
(NOTE: It is *not* necessary to restart the computer.)

At a time of low system activity, prepare to restart the Spectrum Data Manager program. The operators should finish all incomplete work and sign-off. If any stations have page tickets, those stations should proceed to the 'Standby' state.

- Shutdown the Spectrum Data Manager program by clicking on 'Setup' and 'Shutdown'. Click on the two 'OK' verification prompts. **(IT IS NOT NECESSARY TO RESTART THE COMPUTER.)**
- After 10 seconds, restart the Spectrum Data Manager program by clicking on its desktop icon. Operators should press the 'Sign-on' key and resume normal operation.

(Continued on next page)

Part 2. Comm Server

The second part of this update may be done while the Comm Server programs are running. In this part, the updated programs will be installed. The second part involves re-starting the individual server programs in order to activate the new versions. This may be done later at a convenient time.

Step 1. Install the new versions of the Comm Server programs.

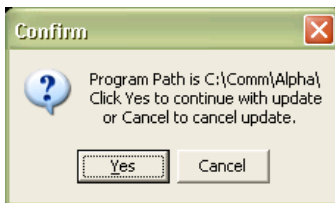
Insert the Spectrum Communications Server Update CD. The CD should 'auto-run' and bring up the following window.



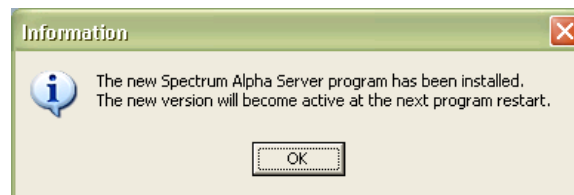
(If the window does not present itself within a minute, then use Windows Explorer to browse to the CD. Then run the program by double-clicking the file 'SpectrumSDMCommUpdate.exe'.)

NOTE: If your SMS Server has not been previously installed, the SMS button will display 'Install SMS Server'.

Click on the 'Update Alpha Server' button. The window below will appear. Either 'C:\Spectrum\Alpha\' or 'D:\Spectrum\Alpha\' or 'E:\Spectrum\Alpha\' is acceptable.



Click on the 'Yes' button.



The window at the right will appear.

Click on the 'OK' button.

Repeat the update steps above for the Email Server, Fax Server and the SMS Server by clicking the appropriate buttons. A confirmation window will appear for each, as they did for the Alpha Server. Click 'Yes' and 'OK' appropriately.

After updating the programs, click on the 'Exit' button. The new versions of the server programs are now installed. You may remove the CD from the CD drive.

(Continued on next page)

Part 2. Restart the individual Spectrum Communications Server programs to activate the updated software. (NOTE: It is *not* necessary to restart the computer.)

At a time of low system activity, stop and restart the Alpha Server, Email Server, Fax Server and SMS Server programs. The new versions of the programs will now be running. This action will not impact the operators, although memos will appear indicating that the server programs are off-line. This is normal. The memos may be filed off.

NOTE: Depending on your hardware configuration, the Communications Server programs (Alpha, Email, Fax and SMS) may reside on the same computer as Spectrum Data Manager — or they may reside on a separate communications server computer. In any case, to update a particular program, you must insert the CD into the CD drive of the computer running the program or programs that you will update.